



ROTA

MÜHENDİSLİK

COMPANY PROFILE

Your Reliable Partner

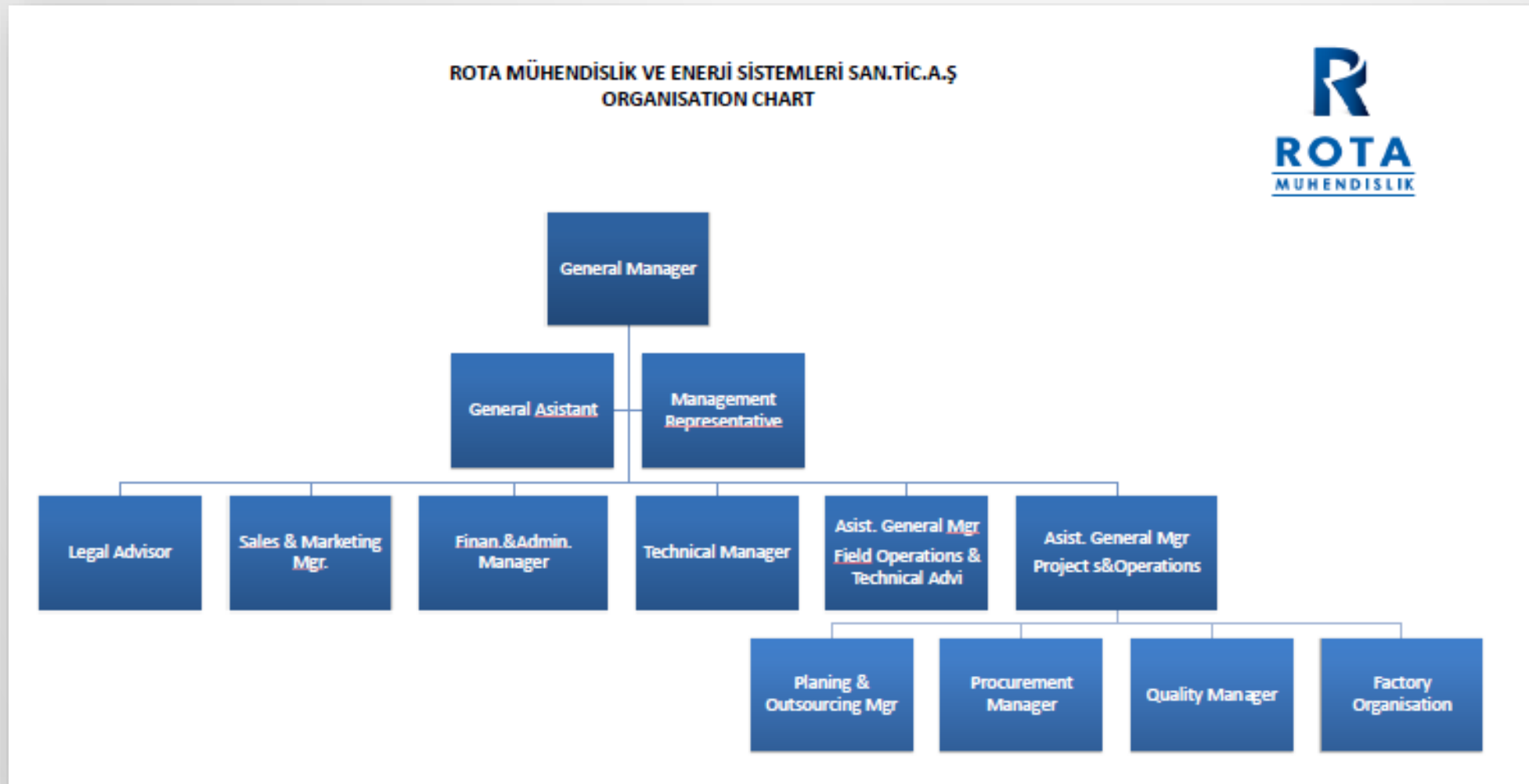


ROTA is an Engineering Procurement and Contracting company specializing in the design, consultancy, manufacturing and construction of industrial systems. The company was founded in 1998 to provide engineering solutions specifically for power plants. Although ROTA is a powerful source for a wide range of services required in power plants, from the design stage up to completion, it is also a reliable solution partner for the process industries such as refineries, chemical plants etc.

Having engineering, design and manufacturing experience in many different projects enables us to contract systems that require special solutions.



ORGANIZATION STRUCTURE



BUSINESS ACTIVITIES

- Power Plant Equipment
- Power Plant Constructions
- Welded Steel Equipment
- Special Products



What we do!

We provide the following services;

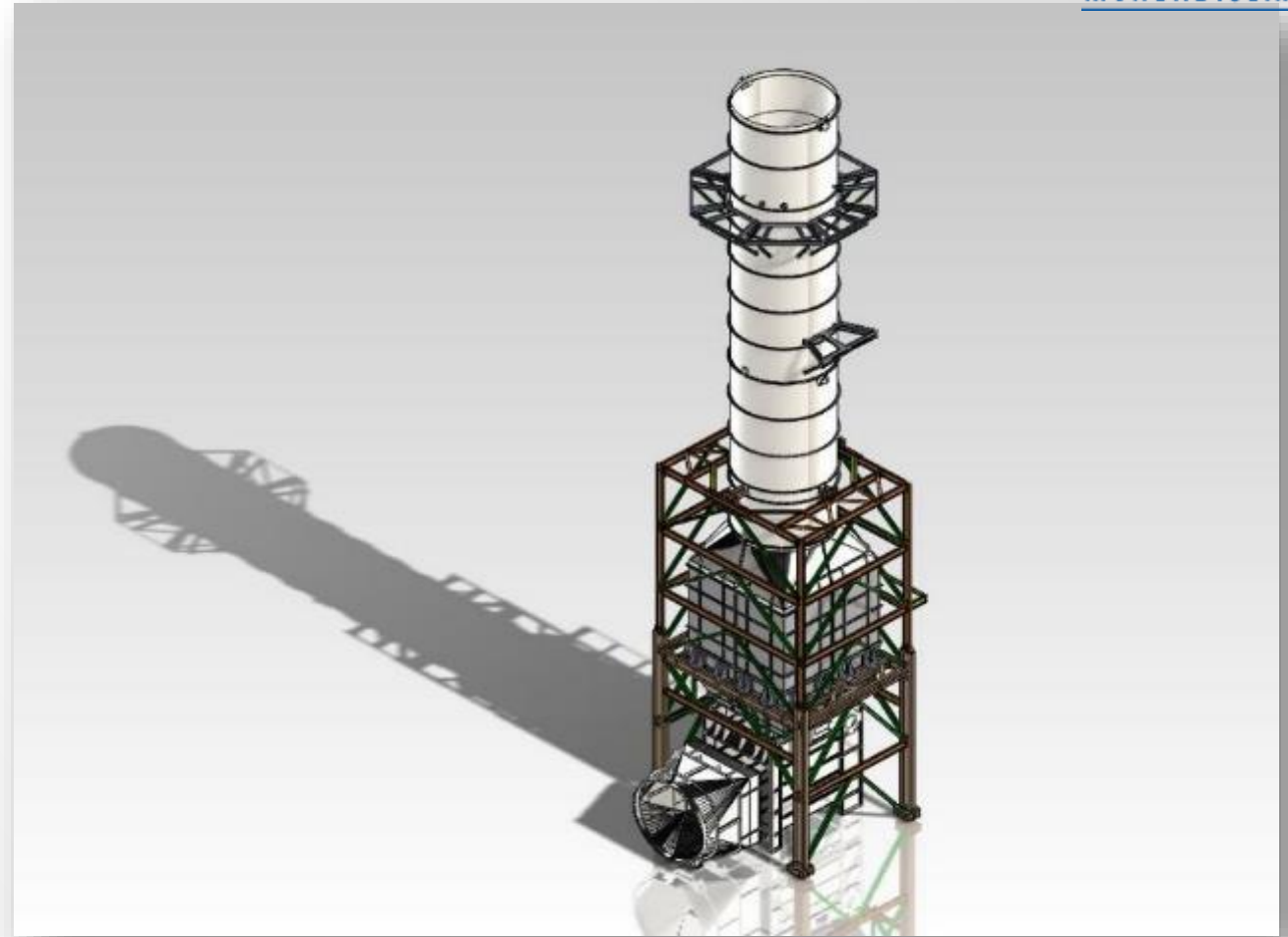
- ✓ Engineering
- ✓ Manufacturing
- ✓ Procurement
- ✓ Construction
- ✓ On Site Support
- ✓ Plant Relocations



ENGINEERING

Our strength lies in our engineering experience. Besides our knowledge in international standards, we use latest software in engineering processes. The detailed analysis, calculations and tune drafting bring the project needs to the systems free of problems.

We carefully prepare general layouts, detail drawings, calculation sheets and material lists and optimize different options according to client requirements.



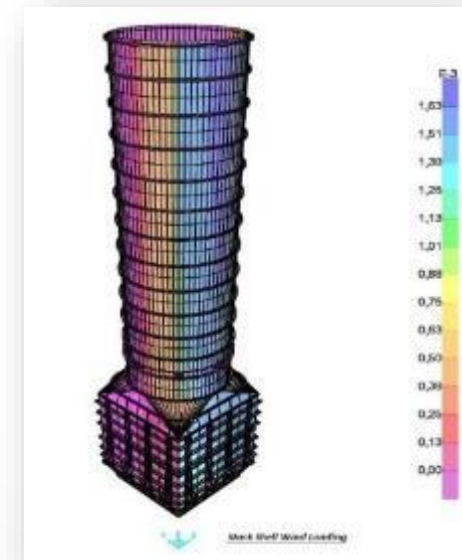
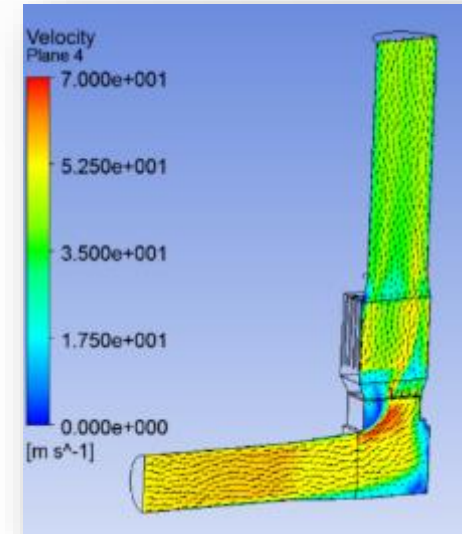
SOFTWARE IN-HOUSE

Engineering Software

- AutoCAD (2D Drafting)
- Solidworks (3D Drafting)
- SAP 2000 – FEA Structural Analysis Software
- ANSYS – Mechanical and Flow Analysis Software
- Codeware Compress - ASME Pressure Vessel and Heat Exchanger Calculation Software
- Firecad – Heat Transfer Software for LP Heat Recovery Boilers

Project Management

- ASYS and SAP– ERP Software
- MS-Project – Scheduling and Resources Software



MANUFACTURING

We have own workshops occupying 7.900 m² indoor and 15.000 m² total area located in Ereğli/Zonguldak which is suitably designed for all international manufacturing standards.

Beside our own workshops, our productions are also carried out by our registered subcontractor companies in Istanbul-Kocaeli region which these subcontractors are strictly followed under our quality standards. All the workshops are a convenient place for shipment by sea or by road.

Our production facilities are capable of handling and processing the oversize products. The operations are supported by CNC machines and computerized methods are used in many steps of operations as well. Each step of production is inspected by the qualified personnel.



Diverter Damper - 7mx7m Gas Path

WORKSHOP PICTURES UNDER PROCESS



WORKSHOP PICTURES UNDER PROCESS



WORKSHOP PICTURES UNDER PROCESS



WORKSHOP PICTURES UNDER PROCESS



Workshop



Workshop

WORKSHOP PICTURES UNDER PROCESS





Silencer Casing



Special Elbows



Silencer Splitters

Exhaust Duct Work



Dampers



Expansion Joints





Diverters



Diverters



Diverters



Diverters



Diverters



Transition Ducts



Pipe Works



Storage Tanks



Steam Ducts



ACC Parts



Heat Exchanger



Field Vessel



Heat Exchanger



Field Vessel



Pressure Vessel



Pressure Vessel



Pressure Vessel

MANUFACTURING & ENGINEERING PERSONNEL

12 Mechanical Engineer

3 Material Engineer

2 Welding Engineer

2 Technicians

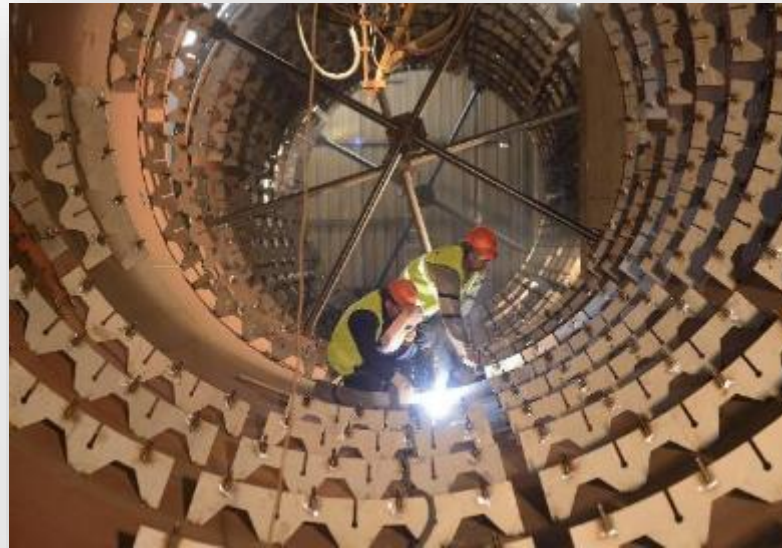
3 Drafters

17 Qualified Welders

3 Foreman

15 Qualified Workers

57 Total Workers plus 45 Subcontracted workers



MAJOR MACHINES & UTILITIES

Overhead travelling cranes – 4 pcs
CNC Plasma cutting machine – 1 pce
Optical flame cutting machine – 1 pce
Manual Sandblasting Cabinet– 1 pce
Manual Painting Cabinet w/Heating System - 1 pce
Cylinder (Hydraulic 4 roll, Mechanical, Beam bending)– 3 pcs
Guillotine shear – 1 pce
Combined shear – 1 pce
Beveling machines – 2 pcs
Folding machine – 1 pce
Portable Assembly Platform – 1 pce
GMAW Machines – 15 pcs
GTAW Machines – 4 pcs
SMAW Machines – 10 pcs
Submerged arc welding machine – 1pce
Boom submerged arc welding machine – 1 pce
Lathe – 1 pce
Milling Machine - 1



CONSTRUCTION

We have valuable experience in power and heavy industrial construction. We are able to manage the safety, quality, cost, schedule and productivity. Our general purpose is to complete a project in a timely manner and all erection services are carried out in accordance with the international standards.

Our production philosophy are always a source for a cost effective construction



PRE-ASSEMBLY AT SHOP



REFERENCES

In addition to lots of successful projects at our home country, we have references for power and industrial products on over 20 countries.



Under Service Since 1999 - Bosen PP – Bursa Turkey



Exhaust System of 266 MW Siemens 4000F GT – Antalya

Exhaust Systems for more than 7500 MW Gas Turbine installations



ROTA
MUHENDISLIK



STC PP - Italy



Dashoguz PP - Turkmenistan



Khoms PP - Libya



Dorad PP - Israel



Cape Lambert PP - Australia



Ahal-2 PP - Turkmenistan

 Power Eq.

 Industrial Eq.



VTS PP - Spain



Belarus PP



Baghdad Bismayah PP - Iraq



Mary 3 PP - Turkmenistan



ROTA
MUHENDISLIK



AGE Denizli PP - Turkey



Balkanabad PP - Turkmenistan



AKSA Antalya PP - Turkey



Tüpraş İzmit PP - Turkey

QUALITY

We are committed to providing total customer satisfaction with quality, reliability and timely delivery of services that meet the expectations through continuous improvement and compliance to standards.

Certification:

EN 1090, ISO 3834, ISO 9001.
Effective work with third party controllers.

Welding Documentation:

According to EN or ASME. WPS, PQR, WPAR and Certificated Welders are available.



GENERAL

Applicable Standards:

EN 13084, ASME STS, AD-Merkblätter and ASME Sec VIII-1.

Material Qualities:

Carbon Steels: EN10025, EN10028, ASTM,
Stainless Steels: ASTM A240 SS 304, 316, 321, 310, 409 etc.

Manufacturing Capabilities:

Average 3500 tons/year.shift
Max Single Piece Weight: 40 tons
Max Single Piece Dimensions: L:20 m W: 5.5 m H: 5.1 m

Location:

By road - Distance to highways: 3 km
By sea – Distance to a commercial port 30 km



ROTA can be your single source for turn-key solutions to your industrial projects from the initial planning stage to the running systems.

Thank you for your attention.

ROTA Mühendislik ve Enerji Sistemleri San. Tic. A.Ş.

Şerifali M. Çetin Cd. Kızkalesi Sk. No.1 A K.8

34775 Ümraniye - İstanbul/Turkey

Tel: 90 216 5933111 Fax: 90 216 5931771

e-mail: rota@rotaeng.com

<http://www.rotaeng.com>